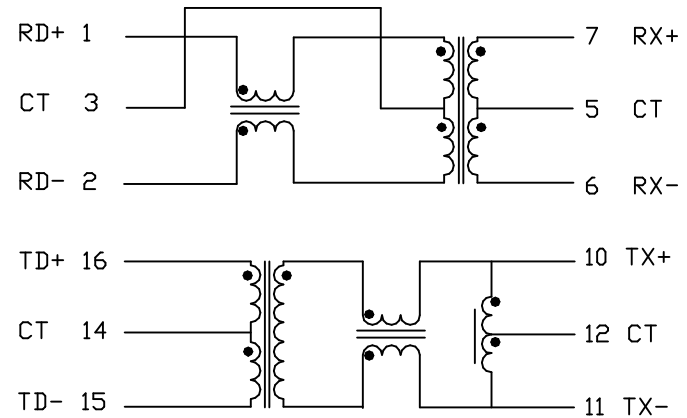


SUGGESTED FOOTPRINT



SPECIFICATIONS : (H1012 COMPATIBLE, IR REFLOWABLE 235±5°C)

1. INSERTION LOSS (0.1-100MHZ) : -1.0dB MAX.
(100-125MHZ) : -1.5dB MAX.
2. RETURN LOSS (1M-40MHZ) : -20dB MIN.
(40M-50MHZ) : -18dB MIN.
(50M-80MHZ) : -14dB MIN.
3. CMRR (30MHZ) : TRANSMITTER -42dB MIN. RECEIVER -40dB MIN.
(60MHZ) : -36dB MIN.
(100MHZ) : -33dB MIN.
4. CROSSTALK (30MHZ) : -50dB MIN.
(60-100MHZ) : -40 dB MIN.
5. DCL (@100KHZ, 0.1Vrms, 8mADC) : 350uH MIN.
6. DCR : 0.9 OHM MAX
7. RISE TIME 2.5 nS TYPICAL
8. HI-PDT TEST : 1500Vrms

						 Atech [®] Atech Technology Co., Ltd. TEL:022794-6667 FAX:022794-8004	TITLE 10/100 BASE T L/P FILTER	
B	TD+ TD- TX+ TX-	07/05 /2002	DOLLY	AL	SUEDY		DWG. NO.	ATPL-111
A	DELETE 13 PIN	02/04 /2002	DOLLY	AL	SUEDY			
	RELEASE	03/12 /01	PAIR		SUEDY	UNITS: M/M	SAFETY	
NO:	DESCRIPTION	DATE	BY	CHK	APPD	DATE	SHEET OF 1	
REVISIONS						03/12/01	DRAW <i>Pair</i>	